

***Polysiphonia* spp as epibiont of *Caligus rogercresseyi* (Crustacea: Copepoda), in *Salmo salar* farming centers**

Descripción de *Polysiphonia* spp como epibionte de *Caligus rogercresseyi* (Crustacea: Copepoda), en centros de cultivo de *Salmo salar*

R Jaramillo^{a*}, O Garrido^a, G Asencio^b, P Barria^c, JP Cumillaf^{c,d}, C Arcos^c, C Sayeg^c, J Mancilla^{c,d}

ABSTRACT. The association between *Polysiphonia* spp and ovigerous females of *Caligus rogercresseyi* is analysed. Females carrying egg sacs exhibited individuals of *Polysiphonia* spp externally attached to the cuticle of both dorsal cephalothorax and abdomen by a mounting disk without penetrating the tissues.

Key words: *Polysiphonia*, epibiont, *Caligus*, *Salmo*.

RESUMEN. Se analiza la asociación de *Polysiphonia* spp con hembras ovigeras de *Caligus rogercresseyi*. Las hembras portadoras de sacos ovígeros presentaron ejemplares de *Polysiphonia* spp adheridos externamente a la cutícula de la zona dorsal del cefalotórax y abdomen mediante un disco de fijación, sin penetrar en los tejidos.

Palabras clave: *Polysiphonia*, epibionte, *Caligus*, *Salmo*.

Lack of available space is a limiting factor for species looking for a suitable hard substratum to settle on, specially in marine subtidal habitats where soft sediments prevail (Connell and Keough 1985). The colonization of animals by benthic sessile marine organisms is a survival strategy (epibiosis) which provides the epibiont with this valuable resource (Abelló *et al* 1990). Consequently a number of bacteria, diatoms, sessile colonial ciliates and macroalgae have been described as epibionts (Wahl and Mark 1999).

A number of protozoans have been cited as epibionts of the copepod *Lepeophtheirus salmonis* (Fernandez-Leborans *et al* 2005) an ectoparasite of the family Caligidae. Treasurer (2002) and Jones and Beamish (2011) have described for this parasite the presence of the alga *Ulva* spp, some ciliated protozoans and monogeneans of the *Udonella* genus.

In Chile, *Udonella australis* has been described living on the surface of the copepods *C. rogercresseyi* and *Lepeophtheirus mugiloidis*, both parasites co-exist on the skin of the rock cod *Eleginops maclovinus* (Marin *et al* 2007).

The high prevalence and intensity on *C. rogercresseyi* led to argue that the dispersion process of monogenean occurs through the sexual contacts of caligids; for that reason

U. australis is found at different stages of development on top of the egg sacs of ovigerous females (Marin *et al* 2007).

After histological analyses of the relationship between *C. rogercresseyi* and the epibiont, it was determined that *Udonella* spp adheres to the membrane lining the shell of the crustacean, without penetrating these structures, remaining fixed or moving on top of the shell and preying on the host fish mucus (Carvajal *et al* 1998, 2001).

Some macroalgae species have been identified by Perez-Martinez *et al* (2001) as epibionts of the cladoceran *Daphnia pulicaria*, a dominant crustacean on a lake in Spain, suggesting that the relationship came when the substrate and the algae were in high aggregations. In Caligids, only the presence of *Ulva* spp on *L. salmonis* has been reported as epibiont, however no further information regarding the interaction between the two species exists (Jones and Beamish 2011).

In this study we will report the presence of a red alga attached to some specimens of the parasite *C. rogercresseyi* collected in a *Salmo salar* farming center, in Chiloé.

Because epibionts were found only in females, a total of 200 *C. rogercresseyi* ovigerous females were collected on June 15, 2015 from a *S. salar* farming center of Marine Harvest Chile in ACS 10a neighborhood, Southeast of Lemuy Island (Chiloé). Salmon cages were located between 0 and 20 meters deep; environmental variables measured at sampling time were 6.7 mg/L O₂, 76.4% O₂ saturation, 11.6 °C (temperature) and 32 PSU in salinity.

Females were isolated from fishes anesthetised with Benzocaine 20%, then transferred to the Central Laboratory of Marine Harvest in a 1 liter plastic container with constant aeration in a ratio of 200 individuals per liter of sea water and keeping the temperature below 12 °C. Subsequently, a number of parasites were fixed in glutaraldehyde 3% for further analysis at electron microscopy, some other

Accepted: 31.03.2016.

^aInstituto de Ciencias Marinas y Limnológicas, Universidad Austral de Chile, Valdivia, Chile.

^bCentro de Investigaciones I-Mar, Universidad de Los Lagos, Puerto Montt, Chile.

^cUnidad Caligus, Laboratorio Central, Marine Harvest Chile, Puerto Montt, Chile.

^dPrograma de Doctorado en Ciencias de la Acuicultura, Universidad Austral de Chile, Valdivia, Chile.

*Corresponding author: R Jaramillo; jjaramil@uach.cl

live individuals were sent to the laboratory of reproductive biology at Universidad Austral de Chile (UACH) in Valdivia, for further studies.

Ten live parasites were analysed by using a stereomicroscope LEICA EZ4D with incident light and provided with a CANON Powershot A1200 HD camera, in order to obtain photographic registry. Subsequently, six specimens were preserved in a formaldehyde solution at 5%, and later treated according to optical microscopy protocols. Histological sections of 7 µm thick were stained with hematoxylin and eosin and then observed at a LEICA CME light microscope.

Four specimens were fixed in a glutaraldehyde solution at 3% in order to conduct studies at Scanning Electron Microscopy (SEM). The specimens were post-fixed in a 1% OsO₄ solution for 2 h at 4 °C, and later dehydrated and dried at critical point of CO₂, then mounted on a holder, coated with a gold film and observed on a scanning electron microscope LEO-420.

The observation at stereomicroscope of ovigerous females of *C. rogercresseyi* allowed to establish the presence of a number of clamping discs including red filaments attached to the dorsal surface of the cephalothorax and the genital segment of the parasite (figure 1a). Near to areas

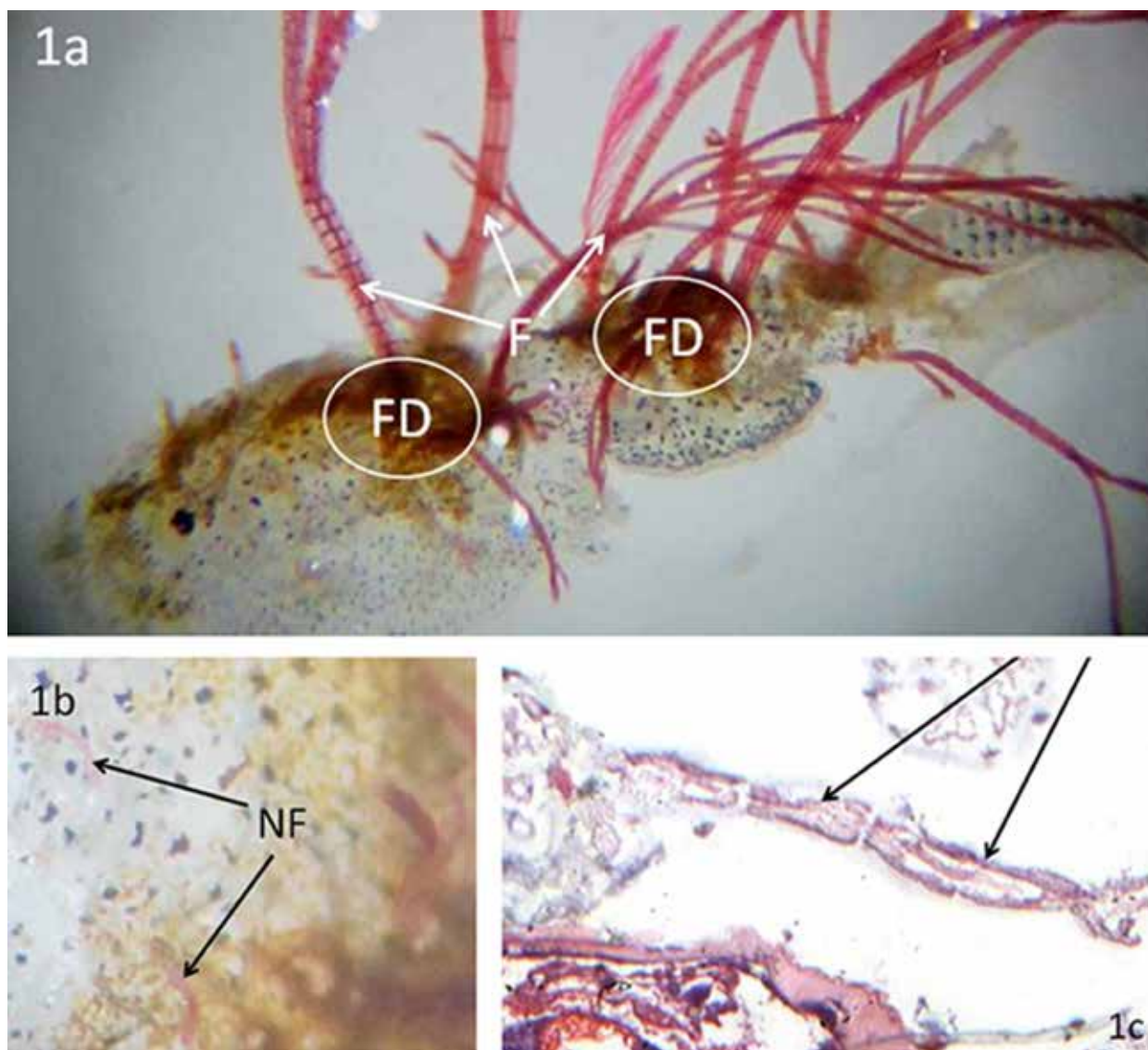


Figure 1. a) General view of fixation discs of *Polysiphonia* spp in the dorsal region of an ovigerous female of *Caligus rogercresseyi*. FD, fixation discs; F, filaments (350X); b) new growing filaments of *Polysiphonia* spp on the dorsal region of *Caligus rogercresseyi*. NF, new filaments (1400x); c) cross section at genital level of *Caligus rogercresseyi*. Arrows showing cell elements of *Polysiphonia* spp filaments (100X).

a) Vista general de discos de fijación de *Polysiphonia* spp. Situados en la región dorsal de una hembra ovígera de *Caligus rogercresseyi*. FD, disco de fijación; F, filamentos (350X). b) nuevos filamentos de *Polysiphonia* spp en la región dorsal de *Caligus rogercresseyi*. NF, nuevos filamentos (1400x). c) sección transversal a nivel de la zona genital de *Caligus rogercresseyi*. Flechas muestran células que forman parte del filamentos de *Polysiphonia* spp (1000x).

of fixation discs, a significant number of growing strands with segmented appearance varying in size were observed (figure 1b). A number of prostrate and erect ecorticate axes, attaching by unicellular rhizoids in connection with pericentral cells, were observed on the genital segment of *C. rogercresseyi*. Spermatangial branches were observed directly from each axial cell and the mature carpogonial branch was four-celled. These observations suggested presence of a representative of filamentous red algae (Rhodophyta) Ceramiales order, *Polysiphonia* genus.

Longitudinal and transversal histological sections at cephalothorax level showed *Polysiphonia* spp filaments, attached to a thick outer coating, chitinous type (figure 1c), no penetration on the parasite structures was observed.

SEM observations contributed to the identification of the algae filaments as formed by columnar cells of strands of

Polysiphonia specimens. *Polysiphonia* spp do not penetrate the parasite, but appears attached to both the cephalothorax and genital segment through mounting discs formed by a number of rhizoids connected with pericentral cells attached to the outer coating of *C. rogercresseyi* (figures 1a, 2a, 2b). An abundant number of rhizoids, diatoms and also a film of bacteria in the fixation disc facilitate the germination of spores of *Polysiphonia* spp (figures 2b, 2c).

The literature indicates that epibionts are located at specific sites of the basibiont which meet the requirements for survival and dispersal. In algae, for example, the amount of light and the exposure to water flows are described as determining factors for development (Borowitzca *et al* 1990, Romagnoli *et al* 2007).

As previously mentioned, algae are able to grow over a number of species including crustacean (Wahl and Mark

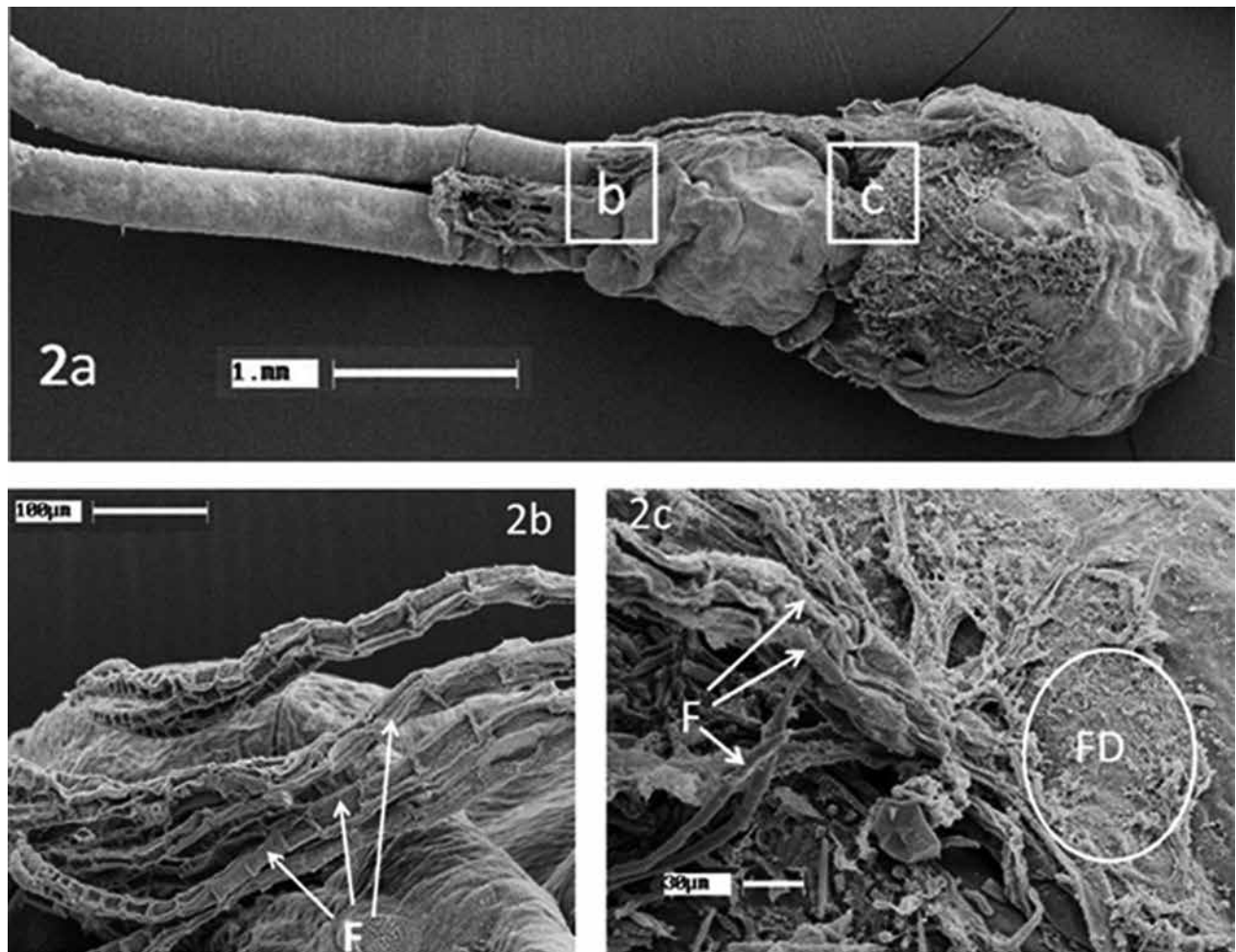


Figure 2. a) SEM images of ovigerous female of *Caligus rogercresseyi* showing *Polysiphonia* spp filaments as epibiont. Frames b and c are magnified in figures b and c; b) filaments of *Polysiphonia* spp in the limit between egg capsule and genital segment of an ovigerous female of *Caligus rogercresseyi*. F, filaments; c) *Polysiphonia* spp attached to the cephalothorax of *Caligus rogercresseyi*. FD, fixation disc; F, filaments.

a) Imágenes a MEB de una hembra ovígera de *Caligus rogercresseyi* mostrando filamentos de *Polysiphonia* spp recuadros b y c aparecen a mayor aumento en las figuras b y c; b) filamentos de *Polysiphonia* spp ubicados en el límite entre la cápsula ovígera y el segmento genital de una hembra ovígera de *Caligus rogercresseyi*. F, filamentos; c) filamentos de *Polysiphonia* spp adheridos al cefalotórax de *Caligus rogercresseyi*. FD, discos de fijación; F, filamentos.

1999) that can serve as a substrate for spore germination, growth of thallus and subsequent development of filaments, acting as epibiont.

Because algae are primary producers in the food chain of aquatic environment, they are able to produce organic substances from inorganic substances converting the light energy into chemical energy by means of photosynthesis. Then it is possible to assume that spores of *Polysiphonia* spp attached to the dorsal surface of cephalothorax or in the genital region of *C. rogercresseyi* could be only a random event and correspond to the first substrate available for attaching, which could be associated to the presence of diatoms and also a film of bacteria facilitating the disc germination and dispersal of spores of *Polysiphonia* spp (Kim and Yang 2005).

Olivares *et al* (1998) have described the presence of filaments of *Polysiphonia* spp as epibiont of the limpet *Fissurella latimarginata*, off the coast of the north of Chile while representatives of the same algae genus have been described as fixed to the shell of some sea turtles (Baez *et al* 2001).

The analysis of previously reported results suggest that the spores of *Polysiphonia* spp use the *C. rogercresseyi* shell as substrate for settlement and further growth and development of the thallus, however no relationship of nutritive dependency is established because these algae are photosynthetic.

Laboratory observations suggest that attachment of *Polysiphonia* spp to the cephalothorax of *C. rogercresseyi* has no effect on the life condition or reproductive capacity of the parasite because algae do not penetrate on the parasite structures¹.

REFERENCES

- Abelló P, R Villanueva, JM Gilí. 1990. Epibiosis in deep-sea crab populations as indicator of biological and behavioural characteristics of the host. *J Mar Biol Ass UK* 70, 687-695.
- Baez JC, JA Camiñas, J Valeiras, F Conde, A Flores-Moya. 2001. First record of the epizoic red seaweed *Polysiphonia caretia* (Hollenberg) in the mediterranean sea. *Act Bot Malacit* 27, 197-201.
- Borowitzca MA, RC Lethbridge, L Charlton. 1990. Species richness, spatial distribution, and colonization pattern of algal and invertebrate epiphytes on the seagrass *Amphibolis griffithii*. *Mar Ecol Prog Ser* 64, 281-291.
- Carvajal J, F Sepúlveda, M George-Nascimento, L González. 1998. Feasibility of the utilization of *Udonella caligorum* (Platyhelminthes: Udonellidae) in the biological control of caligid copepods parasites on cultured salmonids in Chile. *Proceedings of the 9th International Congress of Parasitology*, Bologna, Italy, Pp 739-742.
- Carvajal J, G Ruiz, F Sepúlveda. 2001. Symbiotic relationship between *Udonella* sp. (monogenea) and *Caligus rogercresseyi* (Copepoda), a parasite of the Chilean rock cod *Eleginops maclovinus*. *Arch Med Vet* 33, 31-36.
- Connell JH, MJ Keough. 1985. Disturbance and patch dynamics of subtidal marine animals on hard substrata. In: Pickett STA, White PS (eds). *The ecology of natural disturbance and patchdynamics*. Academic, San Diego, USA, Pp 125-151.
- Fernández-Leborans G, M Freeman, R Gabilondo, C Sommerville. 2005. Marine protozoan epibionts on the copepod *Lepeophtheirus salmonis*, parasite of the Atlantic salmon. *J Nat Hist* 39, 587-596.
- Jones S, R Beamish. 2011. *Salmon Lice: An Integrated Approach to Understanding Parasite Abundance and distribution*. John Wiley & Sons Oxford, UK.
- Kim MS, EC Yang. 2005. Taxonomic Note of *Polysiphonia pacifica* (Ceramiales, Rhodophyta) Complex with Focus on Pacific Isolates. *Algae* 20, 15-23.
- Marin SL, J Carvajal, M George-Nascimento. 2007. Dispersal of *Udonella australis* (Monogenea: Udonellidae) between caligid copepods *Caligus rogercresseyi* and *Lepeophtheirus mugiloidis* on Chilean rock cod. *J Parasitol* 93, 252-257.
- Olivares M, M Bretos, R Chihuailaf, A Zenis. 1998. Biometría, hábitat y epibiontes en *Fissurella latimarginata* (Mollusca: Prosobranchia) en el norte de Chile. *Estud Oceanol* 17, 95-103.
- Pérez-Martínez C, J Barea-Arco, P Sánchez-Castillo. 2001. Dispersal and colonization of the epibiont alga *Korshikoviella gracilipes* (Chlorophyceae) on *Daphnia pulex* (Cladocera). *J Phycol* 37, 724-730.
- Romagnoli T, G Bavestrello, EM Cucchiari, M Stefano, CG Camillo, C Pennesi, S Puce, C Totti. 2007. Microalgal communities epibiontic on the marine hydroid *Eudendrium racemosum* in the Ligurian Sea during an annual cycle. *Mar Biol* 151, 537-552.
- Treasurer JW. 2002. A review of potential pathogens of sea lice and the application of cleaner fish in biological control. *Pest Management Science* 58, 546-558.
- Wahl M, O Mark. 1999. The predominantly facultative nature of epibiosis: experimental and observational evidence. *Mar Ecol Prog Ser* 187, 59-66.

¹ Pedro Barría, pers.comm.